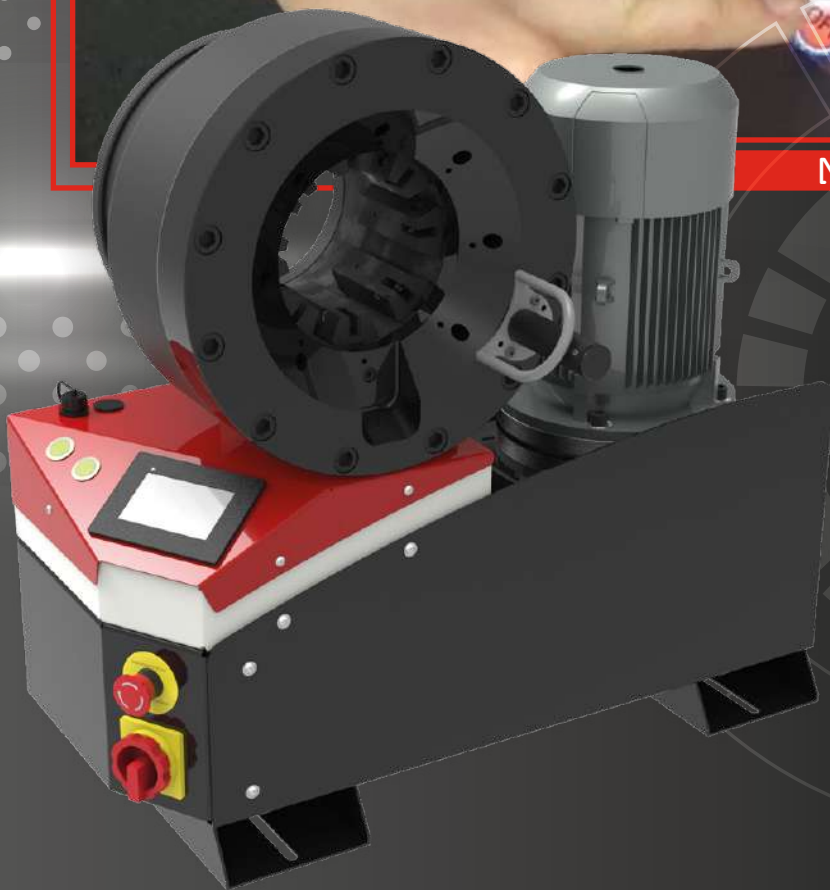


EVO SERIES



MODULAR BENCHTOP CRIMPERS



A GLOBAL REPUTATION

Manuli Hydraulics is the world's leading manufacturer and supplier of fully integrated hydraulic connector solutions and as such we have a great deal to be proud of. Our globally renowned reputation, developed over our 85 year history, is one which few, if any, of our competitors can match, as each and every Manuli Hydraulics product is designed to integrate seamlessly with a carefully selected range of complimentary products, making them some of the most reliable and efficient solutions on the market.

“Manuli Hydraulics is focused on achieving excellence in the design, manufacture and supply of fluid conveyance solutions, components and associated equipment for high pressure hydraulics”

Our company culture embodies sustainable value, customer centrality and ethical responsibility, whilst our stable, family-owned status allows us to have clear long-term strategies and financial robustness, with global revenues of circa €200M per annum.

With direct operations at 20 locations in 15 countries, and around 1,600 employees around the world, Manuli Hydraulics has the logistical network and personnel expertise that allows us to support and work directly with our customers wherever they are based.



MANULI EQUIPMENT EVO RANGE OF CRIMPING MACHINES

Manuli Equipment assembly machines are part of an integrated product range, designed to ensure users get the best results and maximum benefits from their Manuli hoses and fittings. The latest evolution of this range are the new EVO crimping machines.

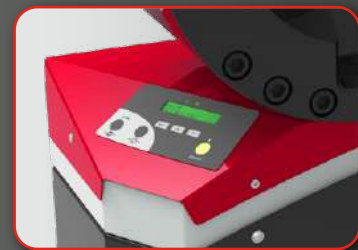
These machines combine the robustness required for harsh environments with the reliability needed for busy workshops. Their compact and ergonomic design, along with the ease of set up and maintenance, make them suitable for a variety of applications.

This extensive range is highly adaptable, with various options available allowing users to customise their machine according to their specific needs.

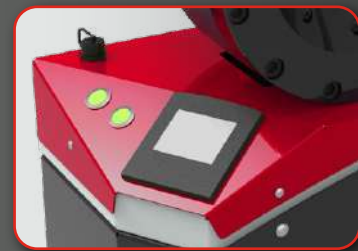
SAFE CRIMP PANELS

There are three varieties of Safe Crimp panels available to fit all requirements:

- **SC panel** - A basic Smart Control panel which includes 2 counters and 3 LED indicator lights. The semi-automatic opening is ideal for serial assemblies as it can be adjusted specifically to allow the fitting to pass through the dies with minimal clearance, reducing the cycle time.
- **SCE panel** - The Safe Crimp Electrical panel includes all of the features of the SC panel, with the addition of an electronic micrometer with the ability to save up to 25 configurations
- **SCS panel** - Safe Crimp System which includes the integration of the Manuli Hydraulics fluid connectors assembling parameters, allowing easy machine set-up and automated quality control of the assembling process for improved production consistency and safety.



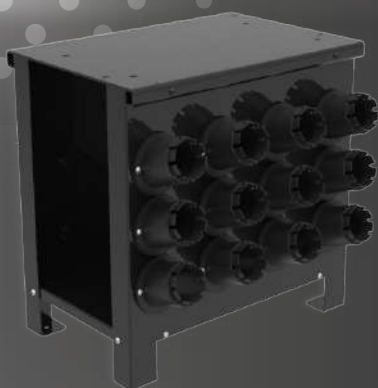
SC Panel



SCE Panel



SCS Panel



ERGONOMIC TABLE

Specifically designed for the EVO range crimping machines, the ergonomic table provides convenient access and storage for the machine's dies. It also ensures a perfect working height, complete access around the machine and a minimal footprint. Die storage rack also available for direct access to the die sets on the machine.

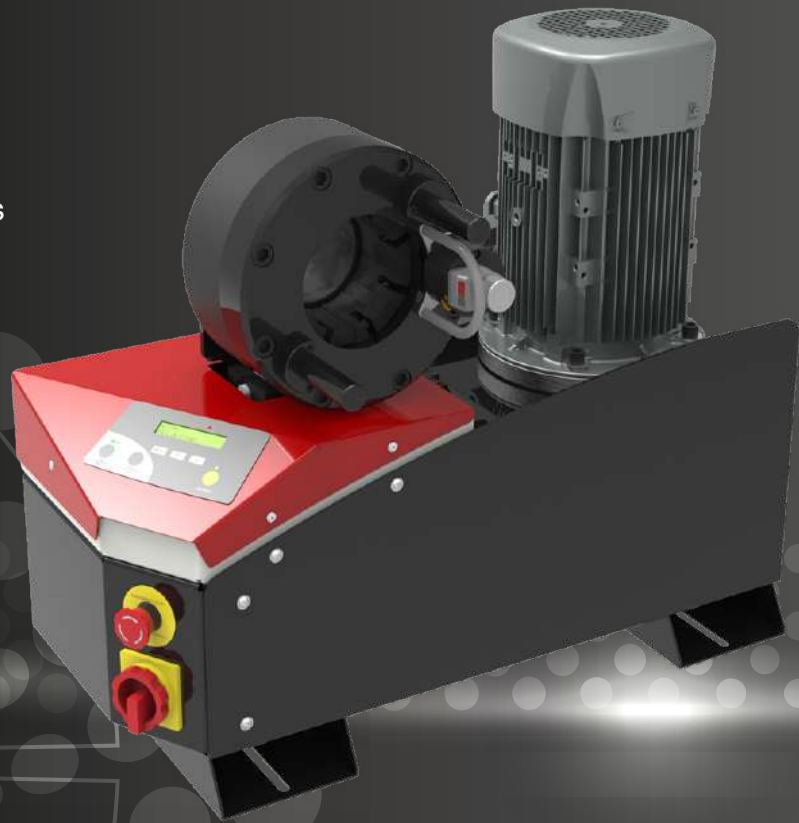
2 YEAR WARRANTY

Register at www.manuli-hydraulics.com for a 2 year warranty and € 100 voucher for use against the purchase of Manuli after-sales maintenance kits.

MB 137 EVO

Key features

- Crimp force of up to 137 tonnes for hoses up to 1 1/4"
- Easy to use and robust
- Extensive range of dies to suit crimping of hydraulic hoses
- Easy to set up
- Easy to maintain
- Fast and reliable



Technical Specifications

Dimensions:	765 x 400 x 650 mm (30 x 16 x 26")	Crimp Range:	4 - 70 mm (0.157 - 2.756")
Net Weight:	130 kg (287 lb)	Crimp Force:	137 t
Voltages:	220/240 V, 3Ph, 50 Hz	Opening with Dies:	+28 mm (+1.102")
	380/415 V, 3wPh, 50 Hz	Complete Opening:	100 mm (3.937")
	208/240 V, 3Ph, 60 Hz	Master Die Length:	75 mm (2.953")
	380/415 V, 3Ph, 60 Hz	Standard Dies:	15, 18, 21, 24, 27, 30, 33 36, 39, 42, 45, 48, 51
Capacity:	2wb: 1 1/4" max. 4ws: 1 1/4" max.	Technical Features:	Other voltages available on request, SCE and SCS version available
Motor:	4.0 kW		

Hose and Fitting Selection

Hose Type	Fittings Type	Max. Hose Size	Ref. Hoses
2 Wire Braid & Textile	MF2000 Multifit; MF3000 OPF; MF3000 OPK	1 1/4"	Tractor; Harvester; Lyteflex; Pilot; Cover; Equator; Rockmaster (braided); Shieldmaster (braided); Astro; Multitex; Hydroplast; Spirtex/K
4 Wire Spirals	MF2000 Multifit; MF3000 OPF; MF3000 OPK	1 1/4"	Rockmaster (spiral); Shieldmaster (spiral); GoldenISO Xtraflex
4 Wire Spirals	MF2000 Interlock Plus; MF2000 Xtralock	3/4"	Rockmaster (spiral); Shieldmaster (spiral); GoldenISO Xtraflex



Performances measured on a 400 V, 3Ph, 50 Hz network

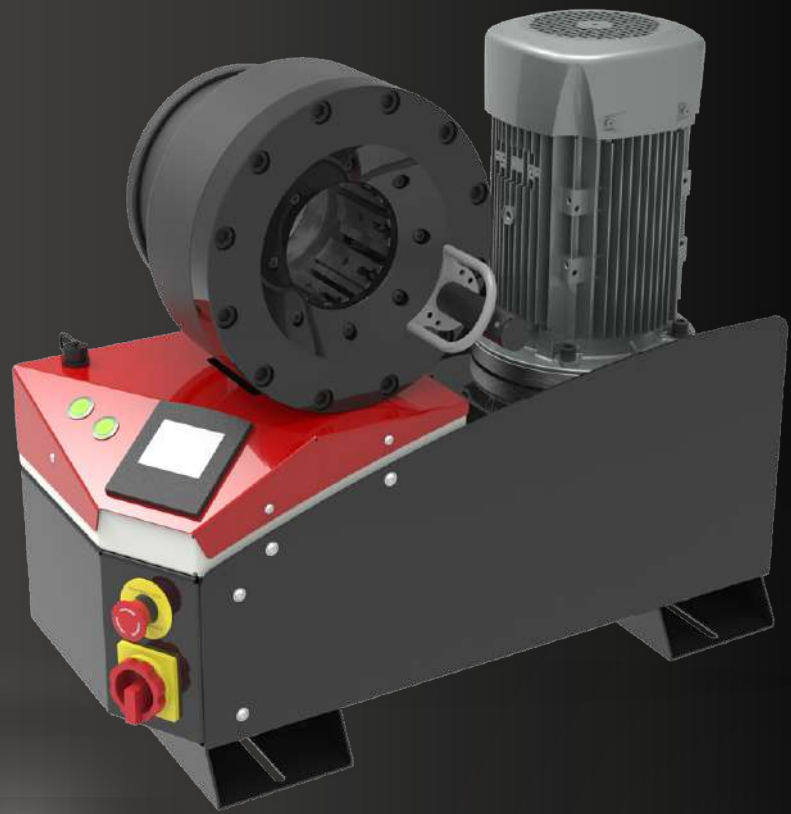
Ordering Information

Product Code	Description
EOA3224NMB137ESC	MB137 EVO SC 380/415V 3PH+N 50HZ without dies

MB 240 EVO

Key features

- Crimp force of up to 240 tonnes for hoses up to 2"
- Easy to use and robust
- Radial die movement
- High crimping force
- Extensive range of dies to suit crimping of hydraulic hoses
- Easy set up and maintenance
- Fast and reliable



Technical Specifications

Dimensions:	765 x 400 x 650 mm (30 x 16 x 26")	Motor:	4.0 kW
Net Weight:	165 kg (364 lb)	Crimp Range:	4 - 76 mm (0.157 - 2.992")
Voltages:	220/240 V, 3Ph, 50 Hz	Crimp Force:	240 t
	380/415 V, 3Ph, 50 Hz	Opening with Dies:	+38 mm (+1.496")
	208/240 V, 3Ph, 60 Hz	Complete Opening:	118 mm (4.645")
	380/415 V, 3Ph, 60 Hz	Master Die Length:	100 mm (3.937")
Capacity:	2wb: 2" max.	Standard Dies:	15, 18, 21, 24, 27, 30, 33, 36, 39, 42, 45, 48, 51, 57, 62, 66, 70, 72
	4ws: 2" max.	Technical Features:	Other voltages available on request, SC and SCS version available
	6ws: 1" max.		

Hose and Fitting Selection

Hose Type	Fittings Type	Max. Hose Size	Ref. Hoses
2 Wire Braid & Textile	MF2000 Multifit; MF3000 OPF; MF3000 OPK	2"	Tractor; Harvester; Lyteflex; Pilot; Cover; Equator; Rockmaster (braided); Shieldmaster (braided); Astro; Multitex; Hydroplast; Spirtex/K
4 Wire Spirals	MF2000 Multifit; MF3000 OPF; MF3000 OPK	2"	Rockmaster (spiral); Shieldmaster (spiral); GoldenISO Xtraflex
4 Wire Spirals	MF2000 Interlock Plus; MF2000 Xtralock; MF2000 Spiralfit	1 1/4"	Rockmaster (spiral); Shieldmaster (spiral); GoldenISO Xtraflex
6 Wire Spirals	MF2000 Interlock Plus; MF2000 Xtralock	1"	Diamondspir; Goldenblast/Six



Performances measured on a 400 V, 3Ph, 50 Hz network

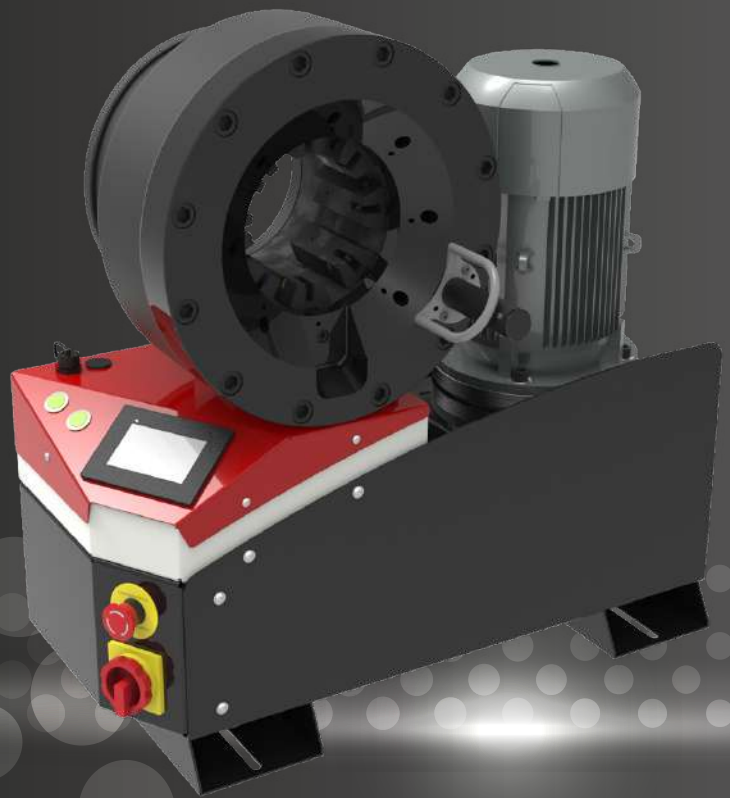
Ordering Information

Product Code	Description
EOA3324NMB240ESC	MB240 EVO SC 380/415V 3PH 50HZ without dies
EOA3324NMB240ESCE	MB240 EVO SCE 380/415V 3PH 50HZ without dies
EOA3324NMB240ESCS	MB240 EVO SCS 380/415V 3PH 50HZ without dies

MB 350 EVO

Key features

- Crimp force of up to 350 tonnes for hoses up to 3"
- Easy to use and robust
- Automatic maintenance alerts
- Groove for 90° long drop fittings
- Also available as MB 350 L with 4.0 kW motor



Technical Specifications

Dimensions: 765 x 400 x 750 mm (30 x 16 x 30")

Net Weight: 262 kg (578 lb)

Voltages: 220/240 V, 3Ph, 50 Hz
380/415 V, 3Ph, 50 Hz
208/240 V, 3Ph, 60 Hz
380/415 V, 3Ph, 60 Hz

Capacity: 2wb: 3" max.
Textile / Suction Hose: 4" max.
4ws: 2" max.
6ws: 2" max.

Safety remarks:

Please consider hose-fitting-machine integration when crimping. Possible limitations in case of double elbow fittings.

Motor: 5.5 kW

Crimp Range: 4 - 130 mm (0.157 - 5.118")

Crimp Force: 350 t

Opening with Dies: +54 mm (+2.125")

Complete Opening: 180 mm (7.086")

Master Die Length: 115 mm (4.523")

Standard Dies: 15, 18, 21, 24, 27, 30, 33, 36, 39, 42, 45, 48, 51, 57, 62, 66, 70, 72, 73, 76

Technical Features:

- Automatic maintenance alerts
- Cylinder protection against dust - durable design
- Also available as MB 350 EVO L with 4.0 kW Motor
- SC and SCE version available

Hose and Fitting Selection

Hose Type	Fittings Type	Max. Hose Size	Ref. Hoses
2 Wire Braid & Textile	MF2000 Multifit; MF3000 OPF; MF3000 OPK	3" with extra dies	Tractor; Harvester; Lyteflex; Pilot; Cover; Equator; Rockmaster (braided); Shieldmaster (braided); Astro; Multitex; Hydroplast; Spirtex/K
4 Wire Spirals	MF2000 Multifit; MF2000 Interlock Plus; MF2000 Spiralfit; MF3000 OPF; MF3000 OPK	2"	Rockmaster (spiral); Shieldmaster (spiral); GoldenISO Xtraflex; Goldenblast
6 Wire Spirals	MF2000 Interlock Plus; MF2000 Spiralfit	2"	Rockmaster/13; GoldenISO/35 Xtraflex; Goldenblast
6 Wire Spirals	MF2000 Interlock Plus; MF2000 Spiralfit; MF2000 Xtralock	1 1/2"	Diamondspir; Rockmaster/15; GoldenISO/42 Xtraflex; Shieldmaster/6000



Performances measured on a 400 V, 3Ph, 50 Hz network

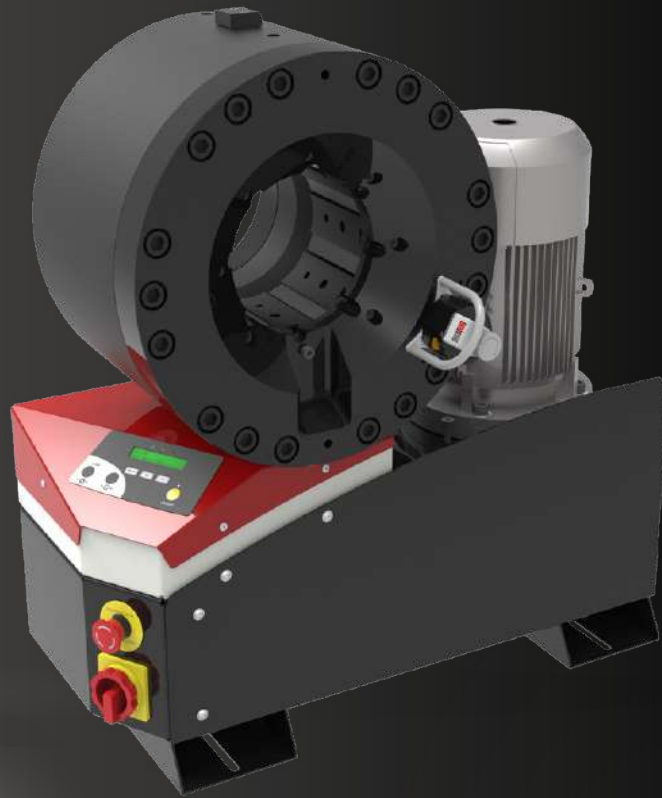
Ordering Information

Product Code	Description
EOA3324NMB350ESC	MB350 EVO 5,5 kW 380-415V 3PH 50 Hz without dies
EOA3324NMB350ESCE	MB350 EVO 5,5 kW 220-240V 3PH 50 Hz without dies
EOA3324NMB350ESCS	MB350 EVO 5,5 kW SCS 380-415V 3PH 50 Hz without dies

GOLDENCRIMP 420

Key features

- High crimping force of 420 tonnes
- Robust design for transport and operation in harsh environments
- Protected cylinders for trouble-free operation in high dust environments
- Large opening suitable for large bore hoses
- Easy maintenance due to foam pads and dust collector



Technical Specifications

Dimensions: 765 x 500 x 800 mm (30 x 20 x 32 inch)

Net Weight: 395 kg (871 lb)

Packaging: 745 x 1150 x 945 mm (29 x 45 x 37 inch)

Voltages: 220/240 V, 3Ph, 50 Hz

380/415 V, 3Ph, 50 Hz

208/240 V, 3Ph, 60 Hz

380/415 V, 3Ph, 60 Hz

Capacity: 6ws: 3" max.

Industrial: 4" max.

Motor: 5.5 kW

Crimp Range: 4 - 130 mm (0.157 - 5.118")

Crimp Force: 420 t

Opening with Dies: +48 mm (+1.9 inch)

Complete Opening: 178 mm (7.0 inch)

Master Die Length: 120 mm (4.724 inch)

Standard Dies: 15, 18, 21, 24, 27, 30, 33, 36, 39, 42, 45, 48, 51, 57, 62, 66, 70, 73, 76

Safety remarks:

Please consider hose-fitting-machine integration when crimping

Technical Features: SCE and SCS version available

Hose and Fitting Selection

Hose Type	Fittings Type	Max. Hose Size	Ref. Hoses
2 Wire Braid & Textile	MF2000 Multifit	4"	Tractor; Harvester; Lyteflex; Pilot; Cover; Equator; Rockmaster (braided); Shieldmaster (braided); Astro; Multitex; Hydroplast; Spirtex/K
4 Wire Spirals	MF2000 Multifit; MF2000 Interlock Plus; MF2000 Xtralock; MF2000 Spiralfit	3"	Rockmaster (spiral); Shieldmaster (spiral); GoldenISO Xtraflex; Xtraflow/4WS; Goldenblast
6 Wire Spirals	MF2000 Interlock Plus; MF2000 Xtralock; MF2000 Spiralfit	3"	Diamondspir/21 up to 3"; Rockmaster/13; Rockmaster/15; Goldenblast/Six
Industrial Textile Hose		4"	Spirtex/K; Others



Performances measured on a 400 V, 3Ph, 50 Hz network

Ordering Information

Product Code	Description
EOA3324NMGC420SC	GOLDENCRIMP/420 SC 415V 3PH 50HZ
EOA3324NMGC420SCE	GOLDENCRIMP/420 SCE 415V 3PH 50HZ
EOA3324NMGC420SCS	GOLDENCRIMP/420 SCS 415V 3PH 50HZ



www.manuli-hydraulics.com/equipment



Global Marketing Office
Email: marketing@manuli-hydraulics.com

© Copyright 2021 Manuli Hydraulics. All rights reserved.
All product names are either trademarks or registered trademarks of
Manuli Hydraulics or Manuli Rubber Industries unless otherwise stated.