

With their distinctive construction and high crimping force of up to 12000 kN, the HM 660, HM 665 and HM 1200 are some of UNIFLEX's powerhouses. They set the standard for quality and cost effectiveness. Using one of these models, you can easily crimp up to 12"-industrial hoses (according to the fitting).



HM 665

Engineered solutions using quality components

- Smaller machine increases ergonomics
- HiLo cylinder - Maximum efficiency causing less heat
- Noiseless high-quality pump
- Full length of fittings crimped in one stroke increases product quality and production efficiency
- Lateral reinforcement optimizes overall tolerance

Fixed 6- o'clock die

- Workpiece does not move, making it easier to position laterally
- Increases productivity, driving up profitability
- Reduces risk for injuries

Slide bearing technology

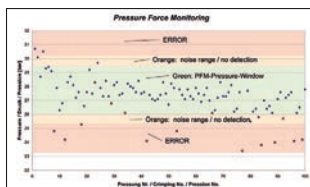
- No greasing improves cleanliness of machine and prolongs its lifetime
- Maximum productivity with very low maintenance costs
- Flaking cannot stick in grease, no risk of prematurely damaging the crimping head
- End product can be used in sanitary applications without cleaning
- 20% more capability for crimping stronger or more difficult couplings versus our competition's equivalent crimpers
- Consistently accurate crimp result

CE compliant

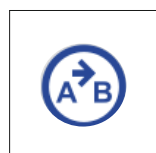
We reserve the right to make technical changes without notice. Options are machine parts that can only be ordered while buying the machine.

Pressure Force Monitoring

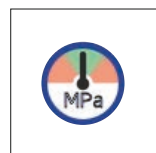
PFM – Standard on all machines with Control C.2



Quality-enhancing option for series production. With PFM, the upper and lower pressure limits can be set by adjusting the tolerance values obtained from test pressing. Pressures outside these limits are output as errors. It is possible to let the machine switch off at a fixed upper or lower limit, thereby obtaining a higher process safety.



Multistep



Crimping by Pressure

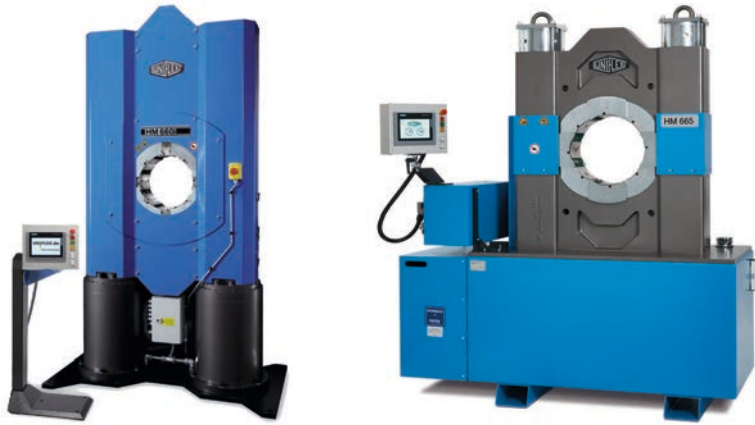


Industrial calculator

UDL included with Control C.2



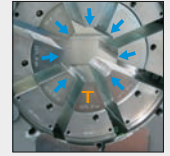
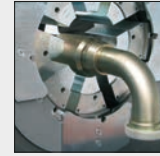
36



HM 660 | HM 1200

HM 665

Additional Information



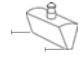
Due to the long master dies, you can crimp virtually all types of fittings.

The fixed 6-o'clock die makes safe and low-force positioning of the workpiece possible, which improves cost effectiveness as well as safety.

Technical data	HM 660	HM 665	HM 1200
Crimp force (kN / Ton)	8 000/800	6 000/600	12 000/1 200
No grease: 20% less friction	✓	✓	✓
Control	Control C.2 + Touch	Control C.2 + Touch	Control C.2 + Touch
SAE R 15/4SH* 1 piece fitting	3"	3"	3"
SAE R 15/4SH* 2 piece fitting	3"	3"	3"
Industrial	10"	12"/16**	10"
90° Elbows	3"	3"	3"
Max. Crimp range	325 mm**	450 mm**	325 mm**
Opening	+ 120 mm	+ 180 mm	+ 120 mm
Opening without dies	395 mm	580 mm	395 mm
Master dies length (mm)	200 mm	250 mm	200 mm
Type of dies	246/237L/239-xx- \emptyset -yy	298/247/245/237L/239-xx- \emptyset -yy	246/237L/239-xx- \emptyset -yy
Speed (mm/sec)			
Close	15	17	11
Crimp	2	0,9	1,5
Open	15	25	11
Noise level	69 dBA	69 dBA	69 dBA
Drive	18,5 kW 3~VAC	5,5 kW 3~VAC	18,5 kW 3~VAC
Oil	300 L	400 L	300 L
L x W x H (mm) Machine + Power Unit	1 400 x 1 050 x 2 470	1800 x 970 x 2400	1 400 x 1 130 x 2 660
L x W x H (mm) Machine + Power Unit	700 x 1 160 x 1 360	integrated	1 100 x 1 300 x 1 500
Weight	4200 kg + 450 kg	5000 kg	4480 kg + 450 kg
HiDS (High Pressure Pump Dynamic Suction)	✓	✓	✓

* Layflat hoses with special dies.

** According to the fitting.

Type of dies	Type of dies	Type of dies	Type of dies
239-xx-\emptyset-yy	237 L 246	298	247
\emptyset mm	\emptyset mm	\emptyset mm	\emptyset mm
-mm-	-mm-	-mm-	-mm-
6,8	54	200	136
9	57	220	146
10	62	240	156
12	67	260	170
14	71	280	185
16	74	300	200
17	78	320	215
19	84	340	230
20	86	360	245
22	90	380	260
24	96		275
26	103		290
28	106		305
30	111		
31	116		
32	121		
34	126		
36	131		
38	136		
39	146		
40	156		
44	170		
47	185		
50	200		
54	215		
57	230		
62	245		
	260		
		Type of dies	
			245
		\emptyset mm	-mm-
		103	130
		106	130
		111	130
		116	130
		121	130
		126	130
		131	130
		136	130
		146	150
		156	150
		170	150
		185	150
		200	150

Accessories

Control C.2: Accessories



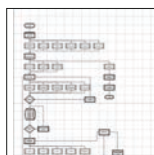
PTS



QDS 239 C



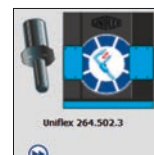
QDS 239 R



Customized software



Electronic caliper



Calibration mandrel



Barcode scanner



TA (A)



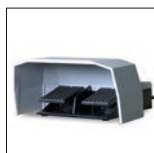
OCS



LUF



Oil Cooler
OC HM xxx



PS Double foot pedal



RFID



ULS



807.2



DMS