



Due to its narrow and innovative construction, high level of user friendliness, and long service life, the HM 3 H sets new standards for quality and cost effectiveness. Thanks to its compact construction, it allows easy, uncomplicated, and “fast” crimping. The intuitive UNIFLEX Software on the convenient C C.2 Touch completes the HM 3 H and ensures product quality. The HM 3 H is compact and easily accessible.



HM 3 H

Engineered solutions using quality components

- Smaller machine increases ergonomics
- Full length of fittings crimped in one stroke increases product quality and production efficiency
- Noiseless high-quality pump

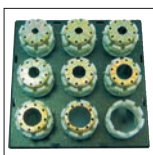
Slide bearing technology

- No greasing improves cleanliness of machine and prolongs its lifetime
- Maximum productivity with very low maintenance costs
- Flaking cannot stick in grease, no risk of prematurely damaging the crimping head
- End product can be used in sanitary applications without cleaning
- 20% more capability for crimping stronger or more difficult couplings versus our competition's equivalent crimpers
- Consistently accurate crimp result

CE compliant

We reserve the right to make technical changes without notice. Options are machine parts that can only be ordered while buying the machine.

Package



GDS 239 B

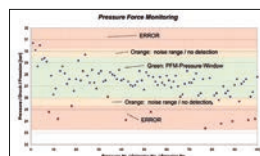


GDC 239.5

- Package = Machine
- + PB Ø 17, 20, 24, 28, 32, 40, 44, 50
- + GDC 239.5
- + GDS 239 B
- + Control C.2

Pressure Force Monitoring

PFM – Standard on all machines with Control C.2

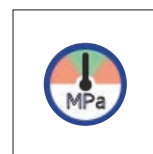


UDL included with Control C.2

Quality-enhancing option for series production. With PFM, the upper and lower pressure limits can be set by adjusting the tolerance values obtained from test pressing. Pressures outside these limits are output as errors. It is possible to let the machine switch off at a fixed upper or lower limit, thereby obtaining a higher process safety.



Multistep



Crimping by Pressure

Accessories



TU Work Bench



SHS



HM 3 H

Technical data	HM 3 H
Crimp force (kN / Ton)	750/75
No grease: 20% less friction	✓
Control	Control C.2 + Touch
SAE R 12 /4SP* 2 piece fitting*	1"
4 SH* 2 piece fitting*	¾"
SAE R 15* 2 piece fitting*	¾"
Industrial*	2"
90° Elbows*	1½"
Max. Crimp range	70 mm
Opening	+ 35 mm
Opening without dies	105 mm
Master dies length (mm)	100 mm
Type of dies	239-xx-Ø-yy
Speed (mm/sec)	
Close	8,3
Crimp	8,3
Open	13,8
Noise level	53 dBA
Drive	5,5 kW 3~VAC
Oil	50 L
L x W x H (mm)	720 x 600 x 672
Weight	193 kg

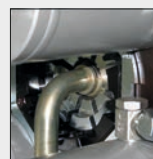
* According to the fitting.

Type of dies

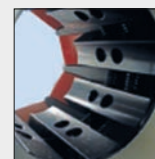


Ø mm	-mm-
6,8	50
9	50
10	50
12	65
14	65
16	65
17	65
19	65
20	65
22	65
24	65
26	65
28	80
30	80
31	80
32	80
34	80
36	80
38	80
39	80
40	80
44	80
47	100
50	100
54	100
57	100
62	100

Additional Information



A 90° elbow with long ending is no problem for the UNIFLEX HM 3 H. While our competition still searches, we have the solution.



With our two position holes-system, the insertion of all dies from both sides is easy and quick. You can also choose two different options to position your die set.

Accessories

Control C.2: Accessories



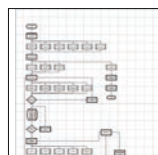
GDS 239 R



TU Rack PB239



Oil Cooler
OC HM xxx



Customized
software



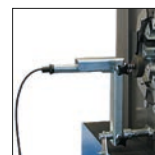
Electronic caliper



Calibration mandrel



Barcode scanner



TA (A)



PTS



LUF



PS Double foot pedal



RFID



ULS



807.2



DMS