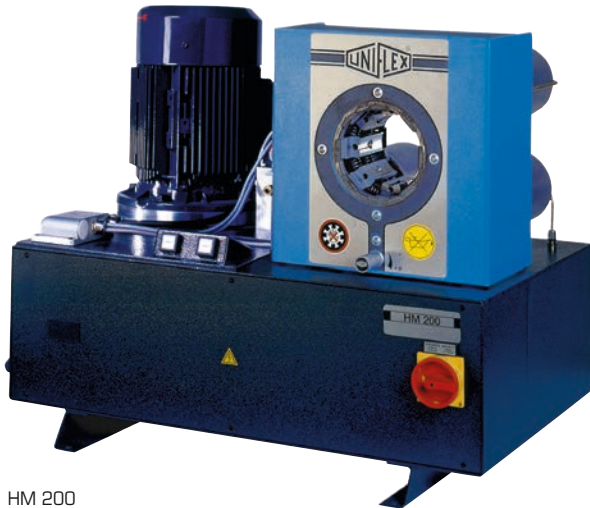
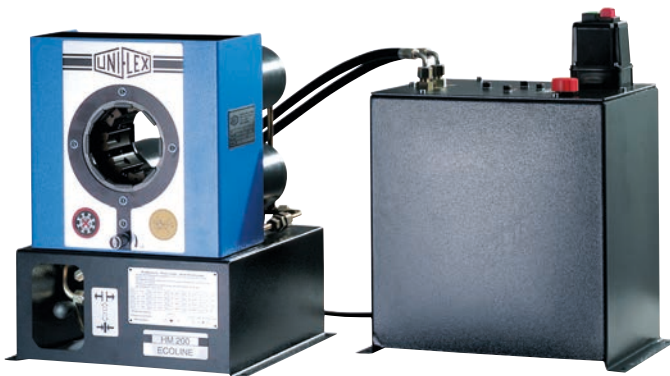




As the unrivaled classic in the 1 1/4" field, with its narrow, innovative construction, high level of user friendliness, versatility and long service life, the HM 200 sets the unbeatable standard for quality and cost effectiveness. Its compact construction allows for ergonomic working. The use of solid master dies allows you to crimp all types of fittings with the greaseless slide bearing technology, which also reduces maintenance costs.



HM 200

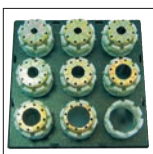


HM 200 Ecoline

<b>Large opening</b>
Openly built for easy crimping of even 90° elbow pieces, without having to remove all the dies
<b>Compact Design</b>
Fits in any workshop
Ideal for on-site service
<b>Slide bearing technology</b>
No greasing improves cleanliness of machine and prolongs its lifetime
Maximum productivity with very low maintenance costs
Flaking cannot stick in grease, no risk of prematurely damaging the crimping head
End product can be used in sanitary applications without cleaning
20% more capability for crimping stronger or more difficult couplings versus our competition's equivalent crimpers
Consistently accurate crimp result
<b>ECOLINE Version</b>
High quality for those new to crimping
<b>CE compliant</b>

We reserve the right to make technical changes without notice. Options are machine parts that can only be ordered while buying the machine.

## Package



QDS 239 B



QDC 239.5

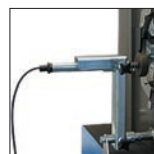
Package = Machine

+ PB Ø 17, 20, 24, 28, 32, 40, 44, 50

+ QDS 239 B

+ QDC 239.5

## Accessories



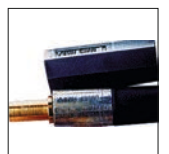
TA (A)



QDS 239 C



QDS 239 R



PTS



TU



LUF



TU Rack PB239



optional: PUU

HM 200

HM 200 Ecoline

Technical Data	HM 200	HM 200 Ecoline
Crimp force (kN / Ton)	1 300/130	1 300/130
No grease: 20% less friction	✓	✓
Control	Control A	Control A
SAE R 12/4SP* 1 piece fitting	1½"	1½"
SAE R 15/4SH* 2 piece fitting	1"	1"
SAE R 12/4SP* 2 piece fitting	1¼"	1¼"
Industrial	2"	2"
90° Elbows	1½"	1½"
Max. Crimp range	70 mm	70 mm
Opening	+ 30 mm	+ 30 mm
Opening without dies	100 mm	100 mm
Master dies length (mm)	75 mm	75 mm
Type of dies	239	239
Speed (mm/sec)		
Close	3,5	3,5
Crimp	3,5	3,5
Open	5,9	5,9
Noise level	69 dBA	69 dBA
Drive	3 kW 3~VAC	3 kW 3~VAC
Oil	40 L	40 L (DC 4 L)
L x W x H (mm)	800 x 530 x 630	420 x 535 x 520
Power Unit L x W x H (mm)	-	300 x 450 x 560
Weight	140 kg	88 kg
<b>Options</b>		
12 VDC/24 VDC	-	✓
1 Phase	✓	2,2 kW

## Type of dies



239

Ø mm	-mm-
6,5	50
9	50
10	50
12	50
14	60
16	60
17	60
19	60
20	60
22	60
24	60
26	75
28	75
30	75
31	75
32	75
34	75
36	75
38	75
39	75
40	75
44	75
47	75
50	75
54	75
57	75
62	75

\* According to the fitting.

## Additional Information



The micrometer allows you to easily set the crimping diameter.



The large opening stroke allows you to pass 90° fittings without changing the crimp dies.



The 12 VDC/24 VDC units offer space- and weight-saving application options, e.g. for fitting service trucks.  
L x W x H (mm)  
441 x 291 x 296



A box with master dies is available in a package.